

# n. family club

---

NURSERY & PRESCHOOL

Leatherhead



## Your new neighbourhood nursery

We're over the moon to be opening our doors in the wonderful community of Leatherhead!

Just a 10-minute walk from the train station, N Leatherhead is a spacious nursery split across two floors with lots of playrooms, and an awe-inspiring atelier for playing host to our N Extras. The nursery has an abundance of outdoor space, zoned into designated areas for babies, toddlers, and preschoolers, a messy play area, and plenty of free space for garden toys and games.

We're all about making things easier for our families, and our buggy safe-store does just the trick, along with an area for bikes and scooters and plentiful car parking. Even better, our parents' breakfast bar will serve (much needed!) coffees and snacks, meaning you'll be set up for the day in just the right way!

**Want to find out more?**  
[nfamilyclub.com](http://nfamilyclub.com) | 020 3865 7402





# Rethinking early years education

Working with leading experts, we've created a progressive learning programme unique to N, and entirely bespoke to each child. Designed to inspire and prepare children to thrive in our busy and ever-changing world, our N curriculum focuses on four key areas:



## Holistic health

Developing mind, body and a rich understanding of self and others through physical activities, emotional literacy experiences, mindfulness and yoga.



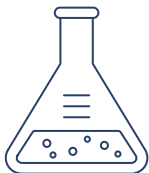
## Self expression

Freedom and confidence to unleash inner creativity through words, movement, music, books and art.



## Global responsibility

Building a deep connection to the surrounding world through regular trips, along with an appreciation for culture, community, diversity and sustainability.



## Inventive ideas

Delighting in the scientific and mathematical structures that support everyday life in everything from technology to cooking – and the mysteries yet to be solved.



## Outdoor learning and Forest School

Our imaginatively designed garden comes complete with plenty of space for playing outdoor games. Regular Forest School-inspired sessions (where children build dens, explore bug hotels and cook outside) and local community trips also form an important part of our core programme.

## N Extras

In addition to our core curriculum pillars, all children have access to our 'N Extras', which are explored weekly in small groups. These extras are covered in our all-inclusive fees and include Spanish, Cooking & Baking, Yoga, Doodle Dance (phonics) and The N Passport – our programme of cultural experiences.

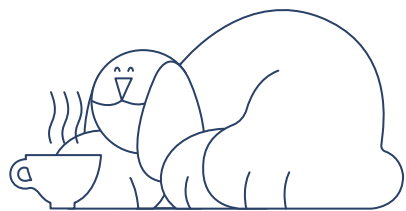


## Passionate about education

Development is fundamental to our team culture and we support our educators to pursue further early years studies through our in-house training scheme, The N Academy. We believe this ensures the best learning environment for your children.

# Nursery for the whole family

Choosing a nursery is a big decision. As well as being the foundation of your child's education, it's a new community of friends and – for many families – a new balancing act between work and parenting. At N, we go beyond for our parents – giving them support, advice and a much-needed helping hand with their daily routine.



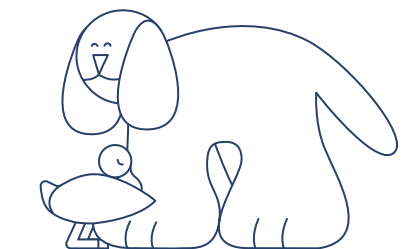
## Parent Breakfast Bar

Haven't found time to feed yourself in the morning rush? Look no further than our dedicated parents' area which serves free coffee and breakfast, every day.



## Flexibility

Subject to availability, we offer a flexible pay-as-you-go hour at either end of the day (7-8am, 6-7pm), making it easier for you to balance drop-offs and pick-ups with a busy schedule.



## App

Wondering what educational activity your child is getting stuck into today? Our handy N Family Club app gives you peace of mind with daily posts and pictures, as well as information about how they're eating and sleeping.

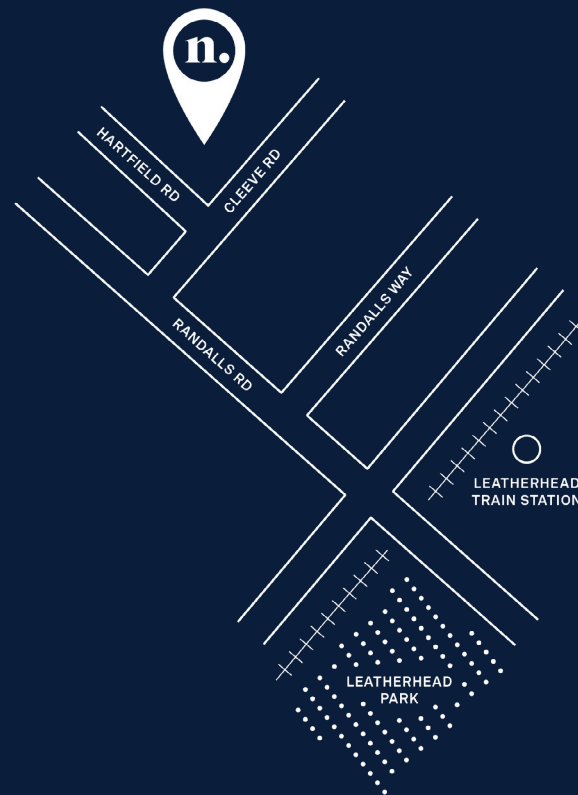
# Family Club and Hub

We're passionate about what we do, which is why we want to support our parents with all of the many joys and challenges that parenting brings. As well as offering the best seasonal parties, our Family Club hosts a monthly programme of online parenting talks with leading experts. We've also created The Family Hub: an online platform packed with advice for the early years, child-approved recipes and activities recommended by our educators to try at home.

## To find out more, visit:

[nfamilyclub.com/the-family-hub](https://nfamilyclub.com/the-family-hub)





Cleeve Road,  
Leatherhead  
KT22 7FJ

---

[nfamilyclub.com](http://nfamilyclub.com)  
020 3865 7402  
@nfamilyclub